

Archives of Surgical Research | Invited Review

Colonic Polyps – What A Surgeon Needs To Know

Iftikhar Ahmed, Faisal Fayyaz, Syed Habib, Manuele Furnari

IMPORTANCE Colorectal polyps are protuberance of the tissue mass into the colonic lumen arising from the colonic mucosal layer. Although mostly benign, some types of colorectal polyps (especially adenoma) are considered to follow a histological pathway called adenoma-carcinoma transition sequence, which leads to the development of colorectal cancer. Up to 80% of colorectal cancers develop from initially benign adenomatous polyps that subsequently undergo such transition. Colonoscopy is considered to be an efficient method of detecting and removing the polyps, thus reducing the incidence of colorectal cancer. Several important characteristics of a polyp can be assessed during endoscopy such as the gross morphology, superficial glandular pattern, vascular pattern and appearance under chromoendoscopy, which help deciding the most suitable type of polypectomy technique and subsequent surveillance examination. This article reviews the histological characteristics and classifications of colorectal polyps, and discuss the traditional and modern endoscopic polypectomy techniques in light of recent scientific data.

KEYWORDS Polyp, Colonoscopy, Polypectomy, Adenoma, Endoscopic mucosal resection

ABBREVIATIONS CRC- colorectal cancer, HP- hyperplastic polyp, Adenoma carcinoma sequence ACS,

HOW TO CITE Ahmed I, Fayyaz F, Furnari M. Colonic Polyps – What a surgeon needs to know. *Archives of Surgical Research*. 2021, 2 (3):36-44. <https://doi.org/10.48111/2021.04.07>.

Invited Review

Author Affiliations: Author affiliations are listed at the end of this article.

Corresponding Author:

Dr Iftikhar Ahmed MRCPGI MD
FRCP, Consultant
Gastroenterologist & Associate
Professor of Medicine
Sulaiman Al Habib Hospital
Takhussusi, Riyadh, KSA
Al-Fasial University Riyadh KSA
University of Southampton,
NHS Foundation Trust UK
iftikhar.ahmed5@nhs.net
00966 546718235
<https://doi.org/10.48111/2021.04.07>

The word polyp, derived from a Greek word 'polypous' (meaning a morbid lump), describes a clump of tissue arising from the colonic mucosal layer protruding into the lumen of the colon. The incidences of colorectal polyps are on the rise worldwide¹ and where majority of these polyps are benign, only certain types are considered to be the precursor lesion of colorectal cancer (CRC), which is a leading cause of cancer related death in the western countries²⁻⁴. Although thought to be a rare disease in the Asian regions, rising trend in the incidence of CRC has been observed lately, which may be attributed to rapidly changing socio-economic demographics along with influence of the genetic and biological factors of the Asian population^{5,6}. The advances in the endoscopic technology and molecular science have increased our knowledge about the transition of a benign polyp into a malignant one through a histological pathway called adenoma-carcinoma sequence (ACS)^{7,8}. ACS is considered to be an integral concept to understand the pathophysiology of colorectal cancer (Figure 1) as up to 80% of colorectal cancer are caused by this transition pathway^{9,10}. Majority of individuals with these adenomatous polyps are often asymptomatic hence growing emphasis on the need of screening colonoscopy to detect and remove these polyps to prevent their potential evolution to adenocarcinoma. It is widely accepted that removing adenomas in the early stages will reduce the incidence of colorectal cancer; and for that

reason, screening colonoscopy to detect and remove colonic polyp is considered to be the most efficient method of CRC prevention^{11,12}.

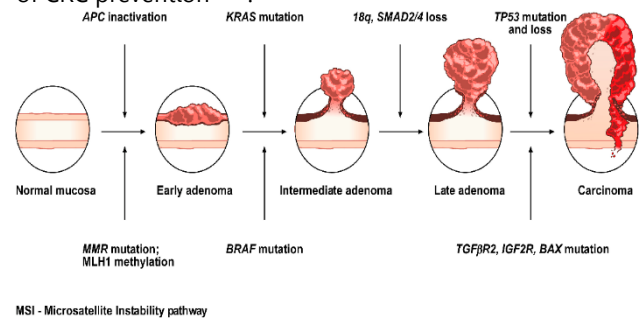


Figure 1: Diagrammatic Illustration of adenoma-carcinoma sequence Adapted from GI Atlas¹⁰

In the recent decades, the advancements in the endoscopic technologies coupled with growing expertise in the endoscopic skills has expanded the field of endoscopic diagnosis and therapies; subsequently endoscopic polypectomy techniques have also risen to another level. Better characterisation of colorectal polyps with advanced imaging has led to the formulation of robust classifications of colorectal polyps in term of their malignant potential. Additionally, development of new endoscopic therapeutic

tools has extended the possibilities of resecting bigger and complex polyps ^{13,14}.

CLASSIFICATION OF COLONIC POLYPS

Certain characteristics of a polyp (such as mucosal surface and the vascular pattern) play a vital role in deciding the most appropriate polypectomy technique and further surveillance in order to prevent colorectal cancer¹⁵. Advanced endoscopic technology such as Narrow Band Imaging (NBI), enables to enhance certain distinguishing features of the polyp such as superficial mucosal pattern, colour and microvascular architecture ¹⁶. Based on these

particular characterisations, several classification protocols have been developed ^{17, 18}.

According to these parameters, polyps can broadly be classified as benign and malignant polyps. Benign polyps can be sub-divided into adenomatous and non-adenomatous polyps, the former with risk of evolution to carcinoma. Malignant polyps with invasion of the submucosal layer require therapies beyond endoscopic resection such as surgery or palliative treatment. Certain small polyp (<5mm-called diminutive polyps) are considered to be of very low risk where a “resect and disregard” approach can be safely adopted to save time and resources ¹⁹.

Benign Polyp		Malignant Polyp	
Adenomatous	Non-Adenomatous Polyp		
	Mucosal Polyp	Submucosal Polyps	
Tubular adenoma	Hyperplastic polyp (including serrated polyps)	Colitis cystica profunda	Non-invasive carcinoma
Tubulovillous adenoma	Mucosal polyp (normal mucosa in a polypoid configuration)	Pneumatosis cystoids coli	Carcinoma in situ
Villous adenoma	Juvenile polyp (retention polyp)	Lymphoid polyps	Intramucosal carcinoma
	Peutz-Jeghers polyp	Lipoma	Invasive carcinoma (through muscularis mucosae)
	Inflammatory polyp	Carcinoid	Metastatic neoplasms
		Other rare lesions	

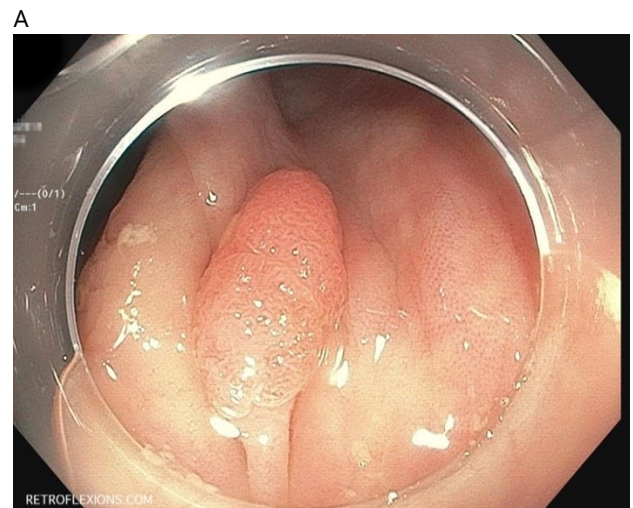
Table 1: Polyp Classification

ADENOMATOUS POLYP

Adenomatous polyps are the commonly identified colonic polyps in general population and comprise approximately 10-25% of all polyps ²⁰. Where approximately 90% of these adenomatous polyps are small (usually less than 1 cm in diameter) and carry a little potential for malignancy, the remaining 10% of larger adenomas (1cm or bigger) approach a 10% chance of containing invasive cancer ²¹. Adenomatous polyps typically extend into the lumen of the colon and can be divided by histology into three types, namely Tubular Adenoma, Villous Adenoma and Tubulovillous Adenoma. There is a fourth category which is recently recognised as a separate entity called Serrated adenomatous Polyp.

Tubular adenomas: These are the most commonly occurring polyps in the rectal area although can be found anywhere in the colon. Tubular adenoma tends to be larger than the other two types, and are usually nonpedunculated, velvety, or cauliflowerlike in appearance ²².

Villous adenomas: are considered to have the highest morbidity and mortality rates of all polyps. These are the villous adenoma which cause hypersecretory syndromes characterized by hypokalaemia and profuse mucousy diarrhoea and discharge and can harbour carcinoma in situ or invasive carcinoma more frequently than other adenomas ²³.



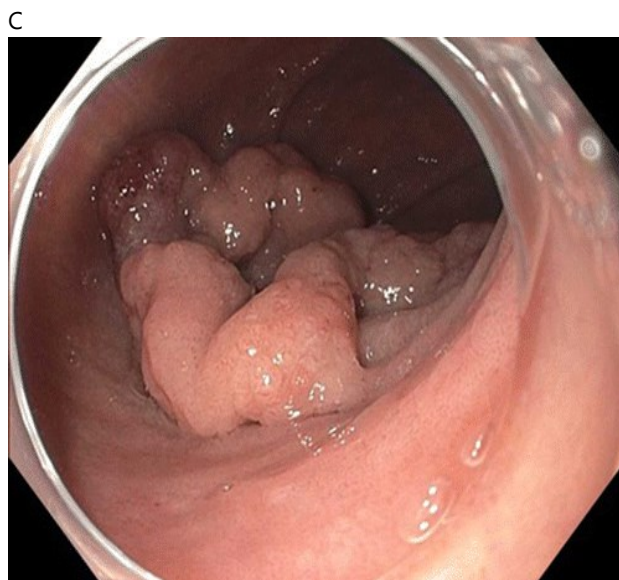
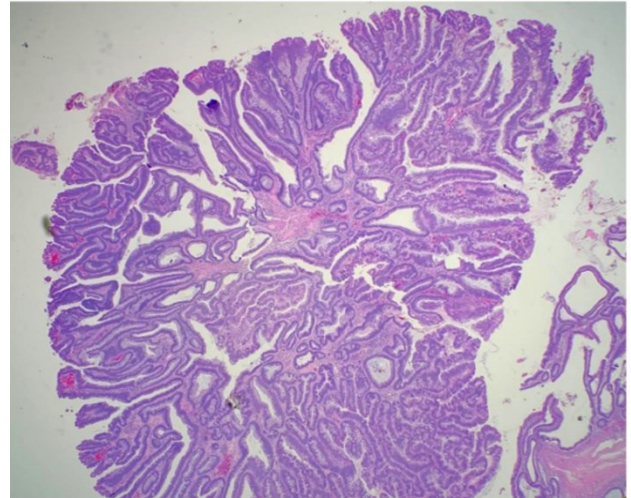
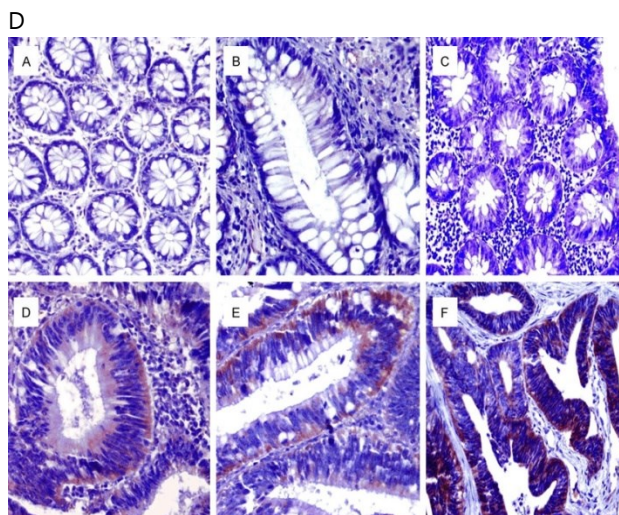


Figure 2: A- tubular adenoma B- Tubulovillous adenoma C-Villous adenoma D- Tubular and Tubulovillous adenoma histology E-Villous adenoma histology. Images adapted from Gastrointestinal Atlas (24)

Tubulovillous adenoma: show a histological pattern of a combination of tubular and villous architecture with villous component usually greater than 25%. The risk of progression to carcinoma is related to both the size and the histology of the adenoma. Adenomas that are greater than 1 cm, contain a substantial (>25%) villous component, or have high-grade dysplasia are commonly referred to as advanced adenoma and carry an increased cancer risks^{24, 25}.



NON-ADENOMATOUS POLYPS

Hyperplastic Polyps: Among the non-adenomatous benign polyps, hyperplastic polyps (HP) are the most commonly occurring polyps in the colon. These are small (few mm to as large as 5mm) polyps, and are considered to be formed when mature epithelial cell migrating to colonic crypts are failed to detach physiologically and continue to pile up leading to formation of a polyp²⁶. Although previously thought to be completely benign, the larger HPs are now considered to have some malignant potential, in particular, larger HPs (>10 mm) were shown to be associated with increased risk of developing into advanced adenoma with some malignant potential²⁷.

Serrated Polyp: Previously considered to be a type of HPs, serrated polyps are more recently described as sessile serrated adenomas and recognised as a separate entity with a varying degree of malignant potential. These exhibit a mixture of adenomatous and hyperplastic features, with regions of saw-toothed, serrated-surface epithelium. However, in contrast to HPs, these polyps have certain differences, namely prominent nucleoli, goblet cell immaturity, and absence of a thickened basement membrane²⁸

E

Other classifications were based on the visual parameter such as shape or gross structure of the polyp, which are also considered significant especially when it comes to the choice of polypectomy techniques. Those polyps which have a head and a stalk are called pedunculated polyps while the ones without a stalk are called sessile polyps. Based on these structural parameters, a robust and widely accepted classification, called Paris Classification, was developed by a working group including endoscopists, surgeons and gastroenterologists to standardise the nomenclature of the polyp in 2000 ²⁹. This classification is based on the morphology of the polyps as it appears during endoscopy assessment as described below in the table.

Paris classification	Characteristics	Description
0-Ip	Polypoid	Protruded, pedunculated
0-Is		Protruded, sessile
0-IIa	Nonpolypoid	Superficial, elevated
0-IIb		Flat
0-IIc		Superficial shallow depressed
0-III	Nonpolypoid and excavated	Excavated

Table 2: Paris classification of colonic polyps

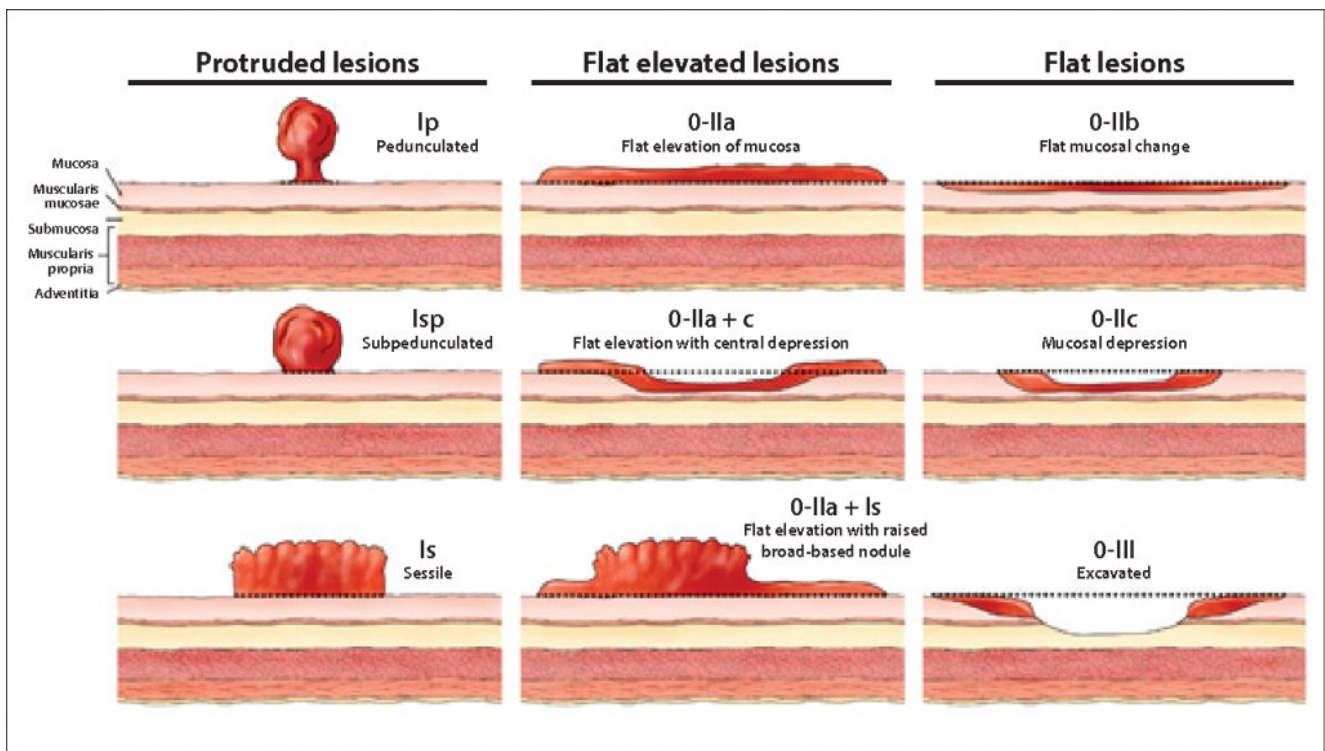


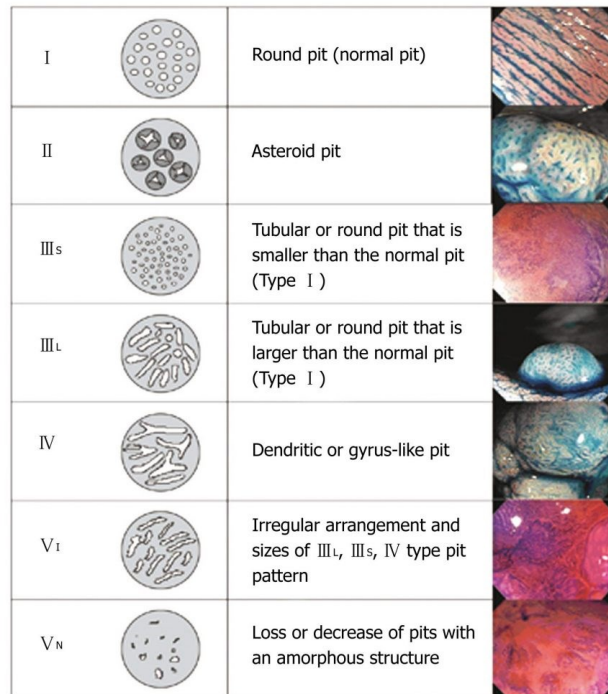
Figure-3: Paris classification, diagrammatic illustration. Adapted from GIE Journal ²⁹

In addition to the gross appearance of polyp, Pit Pattern (glandular pattern) and Vascular Pattern are two important features which require careful assessment during endoscopy. Regarding the observation of the glandular pattern, the pit pattern classification of colonic polyps, called Kudo Classification, is the most important and widely adopted ³⁰.

Histology	Description	Pit pattern	Treatment selection
Nonneoplastic	Normal mucosa (normal round crypts, regular)	I	No treatment
	HP lesion (enlarged stellar crypts, regular)	II	

Neoplastic, adenomatous	Neoplastic lesion (elongated, sinuous crests)	IIIL	Endoscopic resection
	Neoplastic lesion (narrowed round pits, irregular)	IIIS	
	Neoplastic lesion (branched or gyrus-like crests)	IV	
Neoplastic, cancer	Malignant lesion (irregular surface)	VI	Endoscopic resection
	Malignant lesion (amorphous surface)	VN	Surgery

Table 3: Kudo Classification based on pit patterns and associated histological features



Tanaka, et al. *Gastrointest Endosc* 2006; 64: 604-13

Figure 4: Diagrammatic illustration of Kudo classification. Adapted from Tanaka et al³⁰

Several studies, majority of which were conducted by the Japanese authors, demonstrated that the visualisation of the superficial architecture of large bowel mucosa determined by the spatial disposition of glandular orifices is able to predict the histologic nature of the lesion and therefore be able to guide towards the appropriate therapeutic approach³¹.

POLYPECTOMY TECHNIQUES

A wide variety of endoscopic techniques are available for polypectomy these days depending on the local expertise and hospital facilities. The choice of a preferred polypectomy technique is depended on the characteristics of the lesion such as optical diagnosis, size and morphology of the polyp. Several endotherapeutic techniques are included under this category; the simpler endoscopic polypectomy techniques which are commonly performed by almost all level of endoscopists usually encompasses the use of biopsy forceps and different types of polypectomy snares³². However, in the presence of a large, flat or locally advanced polyp, more advanced polypectomy techniques are required, i.e., endoscopic submucosal dissection, underwater mucosectomy and cup-assisted mucosectomy. Where these advanced endotherapeutic techniques offer curative options, these are also associated with higher risks of complications and, therefore, should only be restricted to be performed by a highly trained endoscopist. The goal

of most appropriate polypectomy technique is to obtain a complete resection of the lesion with the best safety profile³³.

GASTROENTEROLOGIST VS SURGEON

When it comes to the advanced endoscopic polypectomy techniques, whether gastroenterologists or surgeons have better endoscopic skills remains a topic of much debate. A number of studies have shown a range of variability in the endoscopic skills among Surgeon and Gastroenterologists for detecting and characterising colon polyp, and endoscopic polypectomy expertise^{34,35}. Such variabilities in skills might be due to non-uniform training curriculum and assessment parameters for endoscopy in Gastroenterology and Surgical training programs in different regions. With advancing endoscopy training and standardisation of colonoscopy practice, especially in the western countries, several quality parameters have been adopted to ensure the high quality of colonoscopy^{36,37}. One of the most important measure of colonoscopy quality is adenoma detection rate (ADR). The higher degree of ADRs is directly proportionate to the quality of colonoscopy, and adoption of ADR as quality marker of colonoscopy has been considered to lower the risk of colorectal cancer³⁸.

Contrary to previous believes, recent studies have shown that Surgeons are as good as Gastroenterologist and advanced Endoscopist at detecting polyps through colonoscopy³⁹. Despite this debate about the variability in endoscopic expertise of Gastroenterologist vs. Surgeon, it remains vitally important that an endoscopist is able to recognise and characterise the polyp accurately and understand his limitations of endoscopic skills before attempting polypectomy^{40,41}.

Simple Polypectomy techniques: Sessile and small pedunculated polyps of up to 1cm are expected to be removed safely and effectively by most endoscopists (whether gastroenterologist or surgeon). These are carried out by using forceps techniques in cases of small sessile polyps (<4mm) or snare polypectomy techniques in cases larger sessile polyps (>4mm) or pedunculated polyps⁴².

Polypectomy for pedunculated polyp: Almost 30% of all polyps are pedunculated polyps which are usually large in size and are generally considered to be "easy" lesions to be resected by most endoscopist using snare. For successful resection of such polyps, the pedicle must be accurately evaluated in order to assess its full dimensions and its ability to be easily isolated and mobilized from the surrounding mucosa. The snare is then passed across the head of the polyp and is placed around the stalk. It is important to ensure that clear non-adenomatous tissue is visible between the snare and the head of the polyp, and then electrocautery is applied to completely resect the polyp from its stalk⁴³. One of the main risks of stalked polypectomy using snare is bleeding which is proportionate

to the polyp dimension and thickness of the stalk containing feeding blood vessel. One way to avoid bleeding is by early application of energy and slow closure of the snare. There are other prophylactic measures which should be considered when the stalk diameter is more than 5 mm or the polyp head is more than 20 mm⁴⁴. These prophylactic measures include application of detachable loops or clips on the stalk below the resection point which has been shown to effectively reduce bleeding rates. Additionally, Epinephrine injection (1:10,000 dilution) can be used to reduce the polyp size which enables less risks of bleeding using standard snare resection (epinephrine volume reduction; EVR)⁴⁵.

Polypectomy techniques for Sessile and Flat polyps:

When it comes to the assessment and polypectomy of sessile polyps, these are of more concern than large pedunculated polyps, predominantly for two reasons. Firstly, the pathway for migration of invasive cells from the tumour into submucosal structures is shorter, and secondly, the complete endoscopic removal is more challenging and more difficult to ascertain.⁴⁶

Depending upon the size and nature of sessile polyps, various polypectomy techniques are used as described below:

Polypectomy using biopsy forceps: Small sessile polyps (<4mm) can be safely removed using biopsy forceps which is by far the most easy and simple way of doing small polypectomy. Where the risks of perforation with cold forceps polypectomy are negligible, it poses a challenge of incomplete resection even in expert hands, particularly when minor initial bleeding occur with adenomatous tissue being present at the site of cold forceps⁴⁷. For these reasons, cold snare resection is preferred over biopsy forceps polypectomy and the latter should be reserved only for diminutive polyps < 3 mm in size where a complete resection can be achieved⁴⁸.

Cold snare polypectomy: For effective resection of sessile polyps larger than 3mm but smaller than 10mm, the cold snare polypectomy technique is recommended, which is safe and effective, and can be performed by most endoscopist⁴⁹. Snares are available in different sizes and types, which can be used depending upon the characteristics and size of sessile polyps to ensure effective polypectomy. Studies have shown a higher complete resection rate using cold snare polypectomy compared to forceps polypectomy, and according to recent data, polyps of over 1cm can also be safely removed using snare polypectomy with expert hands⁵⁰.

Hot snare polypectomy: Hot snare polypectomy is more or less similar to cold snaring technique with additional use of electrocautery, which is applied by providing energy to facilitate tissue cutting and coagulation to prevent bleeding. Although hot snare polypectomy is the widely

practised technique for polyps between 7 and 9 mm, it is increasingly being replaced by cold snare polypectomy for removing polyps of up to 9 mm in size for better safety profile⁵¹. A variety of snares (oval, hexagonal, crescent, etc.) are available, each one with specific advantages. Currently there is no evidence that one device is superior to the others and the choice is usually made by endoscopist's preference⁵².

ADVANCED POLYPECTOMY TECHNIQUES

Beyond the described polypectomy techniques, there are a number of advanced polypectomy techniques for larger and complex polyps which have been introduced lately and should only be carried out by advanced endoscopist who have special training and experience of dealing with such cases.

Endoscopic Mucosal Resection: Endoscopic mucosal resection (EMR) was first described in Japan in the early 1980s and is generally used to remove large sessile polyps or flat lesions up to 20 mm in size by appropriately trained and experienced endoscopists. In the current decade, EMR is widely practiced endoscopic modality to treat early colonic cancer limited to the mucosa⁵³. During EMR, most advanced endoscopist also use a plastic cap mounted at the tip of colonoscope called cap-assisted EMR. The cap separates the endoscope tip from the colonic wall and assists in the appropriate and detailed visualization of a complex sessile polyp especially on the proximal side of a fold by stabilising the tip of colonoscope and keeping the lesion at an adequate distance. The polyp is aspirated in the cap with an inbuilt preloaded snare and saline solution is injected to separate it from underlying mucosa to minimize the risk of perforation. The polyp is then snared and pulled into the cap using the suction function of the endoscope and resected with electrocautery^{54,55}. Another technique, which is called underwater endoscopic mucosal resection, offer advantage of enhanced visualisation of the superficial characteristics and margins of the polyp and does not require submucosal injection to create a fluid cushion between the mucosa and muscularis propria. Water immersion also maintains the adenomatous mucosal folds invaginated and not flattened against the muscularis propria and the lesion is resected by hot snare technique. The success rate of EMR for removing complex sessile polyp of 20mm or larger is reported to be up to 95% with limited complication and avoidance of surgery in 90% with significant reduction in mortality and cost⁵⁶. These findings have also been replicated in other trials showing effective piecemeal removal of 90%–96% of colonic polyp larger than 20 mm in a single or multiple endoscopic session, and avoidance of surgery in more than 85% of patients with significant cost savings⁵⁷.

Endoscopic Submucosal Dissection: Endoscopic submucosal dissection (ESD) initially introduced in Japan for treating early gastric cancer, is used in expert centres now a days for removing complex colonic polyp especially those with suspicious of superficial malignancy, and require radical resection in order to decrease the risk of local tumour recurrence⁵⁸. During ESD, the lesion is marked at the periphery using cautery, and a submucosal injection (indigo carmine) is used to create a long-lasting cushion between the lesion and the muscle layer. Using a transparent cap and under direct visualisation, the submucosal layer is then dissected using electrosurgical knives and the lesion is removed in one piece⁵⁹. In expert hands, ESD offers more complete and accurate pathological assessment of the polyp with resection of residual adenomatous tissue with low local recurrence rates and the possibility to cure low-risk submucosal invasive cancer⁶⁰

COMPLICATIONS OF POLYPECTOMY

Since colonic polyps are considered precursor lesion to develop colon cancer, the aim of colon polypectomy is to prevent the evolution of adenomas to carcinoma and advanced carcinoma. Although the natural history of unresected polyps and their evolution to colon cancer is not entirely known, there is now a growing body of evidence from observational studies and randomised clinical trials supporting the role of polypectomy in decreasing the incidence of colorectal cancer and reducing mortality⁶¹. Polypectomy procedures, on the other hands, are not risk free and even in the expert settings, are related to number of complications such as bleeding, colonic perforation and incomplete resection leading to reoccurrence of polyp and interval cancer. Munich Polypectomy Study, which is one of the largest prospective trial of colonic polypectomies, showed a positive correlation between polyp size (>10mm), type (non-pedunculated) and location (right colon) and the occurrence of postprocedural complications (i.e., bleeding rate of 25% for polyps>3cm)⁶².

The most important complications of endoscopic polypectomy are bleeding and perforation. Several studies have suggested that polyp size (>1cm), morphology (sessile or thick stalk) and location (right side versus left side of the colon) are related to an increased risk of post-polypectomy complications⁶³.

GI bleeding: The most frequent procedure-related complication following polypectomy is GI bleeding, which can occur during polypectomy called immediate bleeding, or usually within one week of polypectomy procedure, called delayed bleeding. For small and diminutive polyps, the incidences of immediate bleeding are reported to be in the order of 0.5%–2.2%, while delayed bleeding is rarer, with overall incidence in range of 0.3%–0.6%. On the other hand, bleeding following large polyp resection is comparatively more common with an estimated incidence of 8.6% of all polypectomies⁶⁴. Most cases of GI bleeding

during polypectomy are self-limiting or can be managed successfully by endoscopic treatment alone such as with endoclips placement or adrenaline injection, whilst only a small proportion experience severe bleeding (1.6%), requiring blood transfusion or interventions other than endoscopic management (i.e. – surgery, interventional radiology).

Several techniques are used to minimise the risk of bleeding and perforation such as injection, clipping and endo-loop placement^{65,66}. There is no consensus as to what technique is preferred over the other and endoscopists use a variety of measures to deal with this complication depending upon the available expertise. A recent survey of polypectomy practices has also shown a high degree of variability between endoscopist to manage the bleeding complications during or after polypectomy⁶⁷. Some important precautions are mandatory particularly when dealing with patients on anticoagulant or antiplatelets therapy at the time of endoscopy. The current European Society of Gastrointestinal Endoscopy (ESGE) guideline stratifies post-polypectomy bleeding risk according to polyp size (<1cm versus >1cm) and type of antiplatelet therapy (aspirin versus thienopyridines) and recommends withholding thienopyridines whenever possible prior to polypectomy. More recently, a study has shown no increase in post-polypectomy bleeding rates with the use of prophylactic endoclips in patients with ongoing anticoagulants if the resected lesions were less than 1 cm in size⁶⁸. The guidelines also recommend placement of a prophylactic endoloop to prevent bleeding in pedunculated polyps with a thick stalk, no recommendations are made concerning the use of endoclips or adrenaline injection. There is little data about the risk of bleeding and the safety of polypectomy in patient on oral anti-coagulant but it is generally accepted that oral anticoagulants should be withheld whenever possible⁶⁹.

Colonic perforation: Colonic perforation during colonoscopy or polypectomy is a rare but serious adverse event. For small polyp resection, the risks of perforation are practically none especially with the use of cold biopsy or cold snare resection, however, the use of electrocautery is most commonly related with colonic perforation. The data from the British Colorectal Cancer Screening Program reported approximately 0.90% incidence of colonic perforation associated with diagnostic colonoscopy⁷⁰. Another large study of outpatient procedure showed a similar incidence of perforations after colonoscopy (0.85 per 1000 procedures), identifying an association between polypectomy and an increased risk of perforation (OR 2.96)⁷¹. A recent systematic review found an overall perforation rate of nearly 4% after an ESD procedure, with rates ranging from 1.5% to 10% in the literature⁷². Most cases of perforation following polypectomy can be successfully treated endoscopically using clip placement whilst only a small proportion requiring surgery. Most recently, use of

endoscopic suturing and over-the-scope clip have been introduced to manage the colonic perforation especially in high-risk complex polypectomy procedures such as ESD.

Post-polypectomy syndrome: This is a rare but recognised complication of colonic polypectomy procedure especially those which required electrocautery, and considered to be due to peritoneal irritation during prolonged polypectomy procedure. The syndrome is manifested as combination of symptoms such as fever, abdominal pain, feeling of being unwell with abnormal inflammatory markers. However, CT findings are usually within normal without any evidence of perforation. It is often self-limiting and can easily be managed with conservative and supportive treatment ^{73, 74}.

Adenoma recurrence: One of the important complications of colonic polypectomy is incomplete resection of polyp leading to polyp recurrence especially adenoma, which is very important in light of cancer prevention programs and the risk of interval cancer. Incomplete resection of adenomatous tissue at the previous colonoscopy was found to be a probable cause of interval cancer in about 9% of the cases from a large British cohort, but rates of up to 26% have been cited ⁷⁵. Recent data has shown that larger lesions as well as flat or sessile lesions seem to carry risks of local recurrence as high as 27%. This is a relevant finding since advanced adenomas have a high rate of progression to invasive cancer, estimated at up to 5.6% for each additional year in some patient subgroups ⁷⁶⁻⁷⁷.

Although serious complications such as bleeding and perforation can occur after polypectomy, thirty-day mortality in these patients is extremely low in most series, suggesting that endoscopic resection is a very safe

procedure in a vast majority of cases ⁷⁸. Cardiopulmonary complications arising during endoscopic procedures are usually related to sedation or anaesthesia and are not directly the result of polypectomy ⁷⁹.

CONCLUSION

In conclusion, colorectal polyp, although predominantly benign, are the precursor lesion of colorectal cancer and early detection with colonoscopy and polypectomy has shown a remarkable success in preventing CRC. An effective approach to safe and efficient polypectomy would entail a thorough discussion with the patient about the benefits and risks of colonoscopy, polypectomy and related risks including those related to sedation. A detailed clinical history and review of medications, in particular, anti-coagulant treatment and appropriate assessment of the endoscopic features of colonic polyp in view of potential histology are of great importance in order to plan the proper therapeutic approach. For small polyps, cold snare polypectomy appears to be the most appropriate technique and should be preferred over hot biopsy forceps. Successful removal of large polyps either by EMR or ESD is now considered safe with high success rate with acceptably low complications. There are several suggestions from empiric experience as well as from scientific evidences that should be given thorough consideration whilst approaching a difficult and complex polypectomy, especially understanding one's limitations of skills, ability to manage complication and regular review of the expertise to perform advanced endoscopy.

ARTICLE INFORMATION Accepted for Publication: August 13, 2021 Published Online: December 29, 2021.

<https://doi.org/10.48111/2021.04.07>

Open Access: This is an open access article distributed under the terms of the CC-BY License. © 2021 Ahmed et al ASR.

Author Affiliations: Sulaiman Al-Habib Hospital, AlFaisal University Riyadh, KSA University of Southampton UK

Financial Support and Sponsorship: Nil.

Conflicts of Interest: There are no conflicts of interest.

REFERENCES

- Zauber AG, Winawer SJ, O'Brien MJ, et al. Colonoscopic polypectomy and long-term prevention of colorectal-cancer deaths. *N Engl J Med.* 2012;366(8):687-696. doi:10.1056/NEJMOA1100370
- Jemal A, Bray F, Center MM, et al. Global cancer statistics. *CA Cancer J Clin.* 2011;61(2):69-90. doi:10.3322/CAAC.20107
- Ferlay J, Pisci M PD. GLOBOCAN 2002: Cancer incidence, mortality and prevalence worldwide. IARC Cancer Base No.5 version 2.0 Lyon France: IARC press 2004, *American Cancer Society, Atlanta.* www.cancer.org.
- Seeff L, Ahmed F, King JB, Coughlin SS. Colorectal cancer incidence in the United States, 1999-2004 : an updated analysis of data from the National Program of Cancer Registries and the Surveillance, Epidemiology, and End Results Program. *Cancer.* 2009;115(9):1967-1976. doi:10.1002/CNCR.24216
- Sung JJ, Lau JY, Goh K, Leung W. Increasing incidence of colorectal cancer in Asia: implications for screening. *Lancet Oncol.* 2005;6(11):871-876. doi:10.1016/S1470-2045(05)70422-8
- Pourhoseingholi MA. Increased burden of colorectal cancer in Asia. *World J Gastrointest Oncol.* 2012;4(4):68-70. doi:10.4251/WJGO.V4.I4.68
- Cho KR, Vogelstein B. Genetic alterations in the adenoma--carcinoma sequence - PubMed. *Cancer.* 1992;70(6Suppl):1727-1731. Accessed September 3, 2021. <https://pubmed.ncbi.nlm.nih.gov/1516027/>
- Cummings OW. Pathology of the adenoma-carcinoma sequence: from aberrant crypt focus to invasive carcinoma. *Semin Gastrointest Dis.* 2000;11(4):229-237.
- Leslie A, Carey FA, Pratt NR, Steele RJ. The colorectal adenoma-carcinoma sequence. *Br J Surg.* 2002;89(7):845-860. doi:10.1046/J.1365-2168.2002.02120.X
- Palma FD, D'Argenio D, Jonathan G, et al. The Molecular Hallmarks of the Serrated Pathway in Colorectal Cancer. *Cancers (Basel).* 2019;11(7):1017. doi:10.3390/CANCERS11071017
- Thiis-Evensen E, Hoff GS, Sauar J, Langmark F, Majak BM VM. [Population-based surveillance by colonoscopy: effect on the incidence of colorectal cancer. Telemark Polyp Study I]. *Scand J Gastroenterol.* 1999;34(4):414-420. Accessed September 3, 2021. <https://www.kreftregisteret.no/Forskning/Prosjekter/prosjektarkiv/NordICC/Publikasjoner/N>

- ordICC-publikasjoner/Population-based-surveillance-by-colonoscopy-effect-on-the-incidence-of-colorectal-cancer-Telemark-Polyp-Study-I/
12. Citarda F, Tomaselli G, Caposaccia R, Barcherini S, Crespi M. Efficacy in standard clinical practice of colonoscopic polypectomy in reducing colorectal cancer incidence. *Gut*. 2001;48(6):812-815. doi:10.1136/GUT.48.6.812
 13. Mönkemüller K, Neumann H, Malfertheiner, Fry LC. Advanced colon polypectomy. *Clin Gastroenterol Hepatol*. 2009;7(6):641-652. doi:10.1016/J.CGH.2009.02.032
 14. Bhatt A, Abe S, Kumaravel A, Vargo J, Saito Y. Indications and Techniques for Endoscopic Submucosal Dissection. *Am J Gastroenterol*. 2015;110(6):784-791. doi:10.1038/AJG.2014.425
 15. Delavari A, Mardan F, Salimzadeh H, et al. Characteristics of Colorectal Polyps and Cancer; a Retrospective Review of Colonoscopy Data in Iran. *Middle East J Dig Dis*. 2014;6(3):144-150. Accessed September 3, 2021. /pmc/articles/PMC4119671/
 16. Sano Y. Narrow Band Imaging (NBI). *Clin Gastroenterol*. 2009;24:47-52.
 17. Rex DK, Kahi C, O'Brien M, et al. The American Society for Gastrointestinal Endoscopy PIVI (Preservation and Incorporation of Valuable Endoscopic Innovations) on real-time endoscopic assessment of the histology of diminutive colorectal polyps. *Gastrointest Endosc*. 2011;73(3):419-422. doi:10.1016/J.GIE.2011.01.023
 18. Tanaka S, Sano Y. Aim to unify the narrow band imaging (NBI) magnifying classification for colorectal tumors: current status in Japan from a summary of the consensus symposium in the 79th Annual Meeting of the Japan Gastroenterological Endoscopy Society. *Dig Endosc*. 2011;23 Suppl 1(SUPPL 1):131-139. doi:10.1111/J.1443-1661.2011.01106.X
 19. Kandel P, Wallace MB. Should We Resect and Discard Low Risk Diminutive Colon Polyps. *Clin Endosc*. 2019;52(3):239-246. doi:10.5946/CE.2018.136
 20. Liljegren A, Lindblom A, Rotstein S, Nilsson B, Rubio C, Jaramillo E. Prevalence and incidence of hyperplastic polyps and adenomas in familial colorectal cancer: correlation between the two types of colon polyps. *Gut*. 2003;52(8):1140-1147. doi:10.1136/GUT.52.8.1140
 21. Shussman N, Wexner SD. Colorectal polyps and polyposis syndromes. *Gastroenterol Rep*. 2014;2(1):1-15. doi:10.1093/GASTRO/GOT041
 22. Taherian M, Lotfollahzadeh S, Daneshpajouhnejad P, Arora K. Tubular Adenoma. Cutan Adnexal Neoplasms. *Published online July 25, 2021*:127-136. Accessed September 3, 2021. <https://www.ncbi.nlm.nih.gov/books/NBK553180/>
 23. Myers DJ AK. Villous Adenoma - StatPearls - NCBI Bookshelf. *Stat Pearls Publishing*. Accessed September 3, 2021. <https://www.ncbi.nlm.nih.gov/books/NBK470272/>
 24. Ferlitsch M, Reinhart K, Pramhas S, et al. Sex-Specific Prevalence of Adenomas, Advanced Adenomas, and Colorectal Cancer in Individuals Undergoing Screening Colonoscopy. *JAMA*. 2011;306(12):1352-1358. doi:10.1001/JAMA.2011.1362
 25. Fairley KJ, Li J, Komar M, Steigerwalt N, Erlich P. Predicting the risk of recurrent adenoma and incident colorectal cancer based on findings of the baseline colonoscopy. *Clin Transl Gastroenterol*. 2014;5(12):64. doi:10.1038/CTG.2014.11
 26. Hayashi T, Yatani R, Apostol J, Stemmermann GN. Pathogenesis of Hyperplastic Polyps of the Colon: A Hypothesis Based on Ultrastructure and in vitro Cell Kinetics. *Gastroenterology*. 1974;66(3):347-356. doi:10.1016/S0016-5085(74)80133-2
 27. Nusko G, Mansmann U, Kirchner T, Hahn EG. Risk related surveillance following colorectal polypectomy. *Gut*. 2002;51(3):424. doi:10.1136/GUT.51.3.424
 28. Rex DK. Serrated Polyps in the Colon. *Gastroenterol Hepatol (N Y)*. 2014;10(10):671. Accessed September 3, 2021. /pmc/articles/PMC4988225/
 29. The Paris endoscopic classification of superficial neoplastic lesions: esophagus, stomach, and colon: November 30 to December 1, 2002. *Gastrointest Endosc*. 2003;58(6 Suppl). doi:10.1016/S0016-5107(03)02159-X
 30. Kudo S, Rubio CA, Teixeira CR, Kashida H, Kogure E. Pit pattern in colorectal neoplasia: endoscopic magnifying view. *Endoscopy*. 2001;33(4):367-373. doi:10.1055/S-2004-826104
 31. Kato S, Fujii T, Koba I, et al. Assessment of colorectal lesions using magnifying colonoscopy and mucosal dye spraying: Can significant lesions be distinguished? *Endoscopy*. 2001;33(4):306-310. doi:10.1055/S-2001-13700
 32. Kang H, Thoufeeq MH. Size of colorectal polyps determines time taken to remove them endoscopically. *Endosc Int open*. 2018;6(5):E610-E615. doi:10.1055/A-0587-4681
 33. Tolliver KA, Rex DK. Colonoscopic polypectomy. *Gastroenterol Clin North Am*. 2008;37(1):229-251. doi:10.1016/J.GTC.2007.12.009
 34. Eberth JM, Josey MJ, Mobley LR, et al. Who Performs Colonoscopy? Workforce Trends Over Space and Time. *J Rural Health*. 2018;34(2):138-147. doi:10.1111/JRH.12286
 35. Mehran A, Jaffe P, Efron J, Vernava A, Liberman MA. Colonoscopy: why are general surgeons being excluded? *Surg Endosc*. 2003;17(12):1971-1973. doi:10.1007/S00464-003-8806-5
 36. Williams MR, Crossett JR, Cleveland EM, et al. Equivalence in colonoscopy results between gastroenterologists and general surgery residents following an endoscopy simulation curriculum. *J Surg Educ*. 2015;72(4):654-657. doi:10.1016/J.JSURG.2015.01.018
 37. Patel NM, Terlizzi JP, Trooskin SZ. Gastrointestinal endoscopy training in general surgery residency: what has changed since 2009? *J Surg Educ*. 2014;71(6):846-850. doi:10.1016/J.JSURG.2014.05.014
 38. Rex DK. Detection Measures for Colonoscopy: Considerations On the Adenoma Detection Rate, Recommended Detection Thresholds, Withdrawal Times, and Potential Updates to Measures. *J Clin Gastroenterol*. 2020;54(2):130-135. doi:10.1097/MCG.0000000000001301
 39. Lee TJ, Rutter MD, Blanks RG, et al. Colonoscopy quality measures: experience from the NHS Bowel Cancer Screening Programme. *Gut*. 2012;61(7):1050-1057. doi:10.1136/GUTJNL-2011-300651
 40. Pace D, Borgaonkar M, Evans B, et al. Annual colonoscopy volume and maintenance of competency for surgeons. *Surg Endosc*. 2017;31(6):2630-2635. doi:10.1007/S00464-016-5275-1
 41. Petersen BT. Quality assurance for endoscopists. *Best Pract Res Clin Gastroenterol*. 2011;25(3):349-360. doi:10.1016/J.BPG.2011.05.003
 42. Singh N, Harrison M, Rex DK. A survey of colonoscopic polypectomy practices among clinical gastroenterologists. *Gastrointest Endosc*. 2004;60(3):414-418. doi:10.1016/S0016-5107(04)01808-5
 43. Tolliver KA, Rex DK. Colonoscopic polypectomy. *Gastroenterol Clin North Am*. 2008;37(1):229-251. doi:10.1016/J.GTC.2007.12.009
 44. Di Giorgio P, De Luca L, Calcagno G, et al. Detachable snare versus epinephrine injection in the prevention of postpolypectomy bleeding: a randomized and controlled study. *Endoscopy*. 2004;36(10):860-863. doi:10.1055/S-2004-825801
 45. Hogan RB, Hogan RB 3rd. Epinephrine volume reduction of giant colon polyps facilitates endoscopic assessment and removal. *Gastrointest Endosc*. 2007;66(5):1018-1022. doi:10.1016/J.GIE.2007.03.1078
 46. Jung YS, Park JH, Kim HJ, et al. Complete biopsy resection of diminutive polyps. *Endoscopy*. 2013;45(12):1024-1029. doi:10.1055/S-0033-1344394
 47. Peluso F, Goldner F. Follow-up of hot biopsy forceps treatment of diminutive colonic polyps. *Gastrointest Endosc*. 1991;37(6):604-606. doi:10.1016/S0016-5107(91)70863-8
 48. Kim JS, Lee BI, Choi H, et al. Cold snare polypectomy versus cold forceps polypectomy for diminutive and small colorectal polyps: a randomized controlled trial. *Gastrointest Endosc*. 2015;81(3):741-747. doi:10.1016/J.GIE.2014.11.048
 49. Repici A, Hassan C, Vitetta E, et al. Safety of cold polypectomy for. *Endoscopy*. 2012;44(1):27-31. doi:10.1055/S-0031-1291387
 50. Muniraj T, Sahakian A, Ciarleglio MM, Deng Y, Aslanian HR. Cold snare polypectomy for

- large sessile colonic polyps: a single-center experience. *Gastroenterol Res Pract*. 2015;20(15):175-959. doi:10.1155/2015/175959
51. Uraoka T, Ramberan H, Matsuda T, Fujii T, Yahagi N. Cold polypectomy techniques for diminutive polyps in the colorectum. *Dig Endosc*. 2014;26 Suppl 2:98-103. doi:10.1111/DEN.12252
 52. Ichise Y, Horiuchi A, Nakayama Y, Tanaka N. Prospective randomized comparison of cold snare polypectomy and conventional polypectomy for small colorectal polyps. *Digestion*. 2011;84(1):78-81. doi:10.1159/000323959
 53. Holt BA, Jayasekeran V, Sonson R, Bourke MJ. Topical submucosal chromoendoscopy defines the level of resection in colonic EMR and may improve procedural safety (with video). *Gastrointest Endosc*. 2013;77(6):949-953. doi:10.1016/J.GIE.2013.01.021
 54. Iishi H, Tatsuta M, Iseki K, et al. Endoscopic piecemeal resection with submucosal saline injection of large sessile colorectal polyps. *Gastrointest Endosc*. 2000;51(6):697-700. doi:10.1067/MGE.2000.104652
 55. Tamura S1, Nakajo K, Yokoyama Y, et al. Evaluation of endoscopic mucosal resection for laterally spreading rectal tumors. *Endoscopy*. 2004;36(4):306-312. doi:10.1055/S-2004-814204
 56. Kaltenbach T, Soetikno R. Endoscopic resection of large colon polyps. *Gastrointest Endosc Clin N Am*. 2013;23(1):137-152. doi:10.1016/J.GIEC.2012.10.005
 57. Kedia P, Wayne JD. Colon polypectomy: a review of routine and advanced techniques. *J Clin Gastroenterol*. 2013;47(8):657-665. doi:10.1097/MCG.0B013E31829EBDA7
 58. Larghi A, Waxman I. State of the art on endoscopic mucosal resection and endoscopic submucosal dissection. *Gastrointest Endosc Clin N Am*. 2007;17(3):441-469. doi:10.1016/J.GIEC.2007.05.012
 59. Burgess NG, Bahin FF, Bourke MJ. Colonic polypectomy (with videos). *Gastrointest Endosc*. 2015;81(4):813-835. doi:10.1016/J.GIE.2014.12.027
 60. Fujishiro M, Yahagi N, Kakushima N, et al. Successful nonsurgical management of perforation complicating endoscopic submucosal dissection of gastrointestinal epithelial neoplasms. *Endoscopy*. 2006;38(10):1001-1006. doi:10.1055/S-2006-944775
 61. Zaubler AG, Winawer SJ, O'Brien MJ, et al. Colonoscopic Polypectomy and Long-Term Prevention of Colorectal-Cancer Deaths. *N Engl J Med*. 2012;366(8):687. doi:10.1056/NEJMOA1100370
 62. Heldwein W, Dollhopf M, Rösch T, et al. The Munich Polypectomy Study (MUPS): prospective analysis of complications and risk factors in 4000 colonic snare polypectomies. *Endoscopy*. 2005;37(11):1116-1122. doi:10.1055/S-2005-870512
 63. Rabeneck L, Paszat LF, Hilsden RJ, et al. Bleeding and perforation after outpatient colonoscopy and their risk factors in usual clinical practice. *Gastroenterology*. 2008;135(6):1899-1906. doi:10.1053/J.GASTRO.2008.08.058
 64. Watabe H, Yamaji Y, Okamoto M, et al. Risk assessment for delayed hemorrhagic complication of colonic polypectomy: polyp-related factors and patient-related factors. *Gastrointest Endosc*. 2006;64(1):73-78. doi:10.1016/J.GIE.2006.02.054
 65. Dobrowolski S, Dobosz M, Babicki A, Głowacki J, Natecz A. Blood supply of colorectal polyps correlates with risk of bleeding after colonoscopic polypectomy. *Gastrointest Endosc*. 2006;63(7):1004-1009. doi:10.1016/J.GIE.2005.11.063
 66. Rabeneck L, Saskin R, Paszat LF. Onset and clinical course of bleeding and perforation after outpatient colonoscopy: a population-based study. *Gastrointest Endosc*. 2011;73(3):520-523. doi:10.1016/J.GIE.2010.10.034
 67. Vormbrock K, Mönkemüller K. Difficult colon polypectomy. *World J Gastrointest Endosc*. 2012;4(7):269. doi:10.4253/WJGE.V4.I7.269
 68. Boustière C, Veitch A, Vanbiervliet G, et al. Endoscopy and antiplatelet agents. European Society of Gastrointestinal Endoscopy (ESGE) Guideline. *Endoscopy*. 2011;43:445-458. doi:10.1055/s-0030-1256317
 69. Hui AJ, Wong RM, Ching JY, et al. Risk of colonoscopic polypectomy bleeding with anticoagulants and antiplatelet agents: analysis of 1657 cases. *Gastrointest Endosc*. 2004;59(1):44-48. doi:10.1016/S0016-5107(03)02307-1
 70. Lee TJ, Rutter MD, Blanks RG, et al. Colonoscopy quality measures: experience from the NHS Bowel Cancer Screening Programme. *Gut*. 2012;61(7):1050-1057. doi:10.1136/GUTJNL-2011-300651
 71. Stock C, Ihle P, Sieg A, et al. Adverse events requiring hospitalization within 30 days after outpatient screening and nonscreening colonoscopies. *Gastrointest Endosc*. 2013;77(3):419-429. doi:10.1016/J.GIE.2012.10.028
 72. Benson BC, Myers JJ, Laczek JT. Postpolypectomy Electrocoagulation Syndrome: A Mimicker of Colonic Perforation. *Case Rep Emerg Med*. 2013;2013:1-3. doi:10.1155/2013/687931
 73. Shin YJ, Kim YH, Lee KH, et al. CT findings of post-polypectomy coagulation syndrome and colonic perforation in patients who underwent colonoscopic polypectomy. *Clin Radiol*. 2016;71(10):1030-1036. doi:10.1016/J.CRAD.2016.03.010
 74. Pohl H, et al. Incomplete polyp resection during colonoscopy—results of the complete adenoma resection (CARE) study. *Gastroenterology*. 2013;144(1):74-80. doi:10.1053/J.GASTRO.2012.09.043
 75. Robertson DJ, Greenberg ER, Beach M, et al. Colorectal cancer in patients under close colonoscopic surveillance. *Gastroenterology*. 2005;129(1):34-41. doi:10.1053/J.GASTRO.2005.05.012
 76. Buchner AM, Guarner-Argente C, Ginsberg GG. Outcomes of EMR of defiant colorectal lesions directed to an endoscopy referral center. *Gastrointest Endosc*. 2012;76(2):255-263. doi:10.1016/J.GIE.2012.02.060
 77. Furnari M, Voiosu T, Ahmed I et al. Approaching polyps in the time of discrimination. *Rev Gastroenterol Hepatol Nutr*. 2015;2:28-38. doi:10.11138/RGHN/2015.2.1.028
 78. Anderloni A, Jovani M, Hassan C, Repici A. Advances, problems, and complications of polypectomy. *Clin Exp Gastroenterol*. 2014;7(1):285-296. doi:10.2147/CEG.S43084